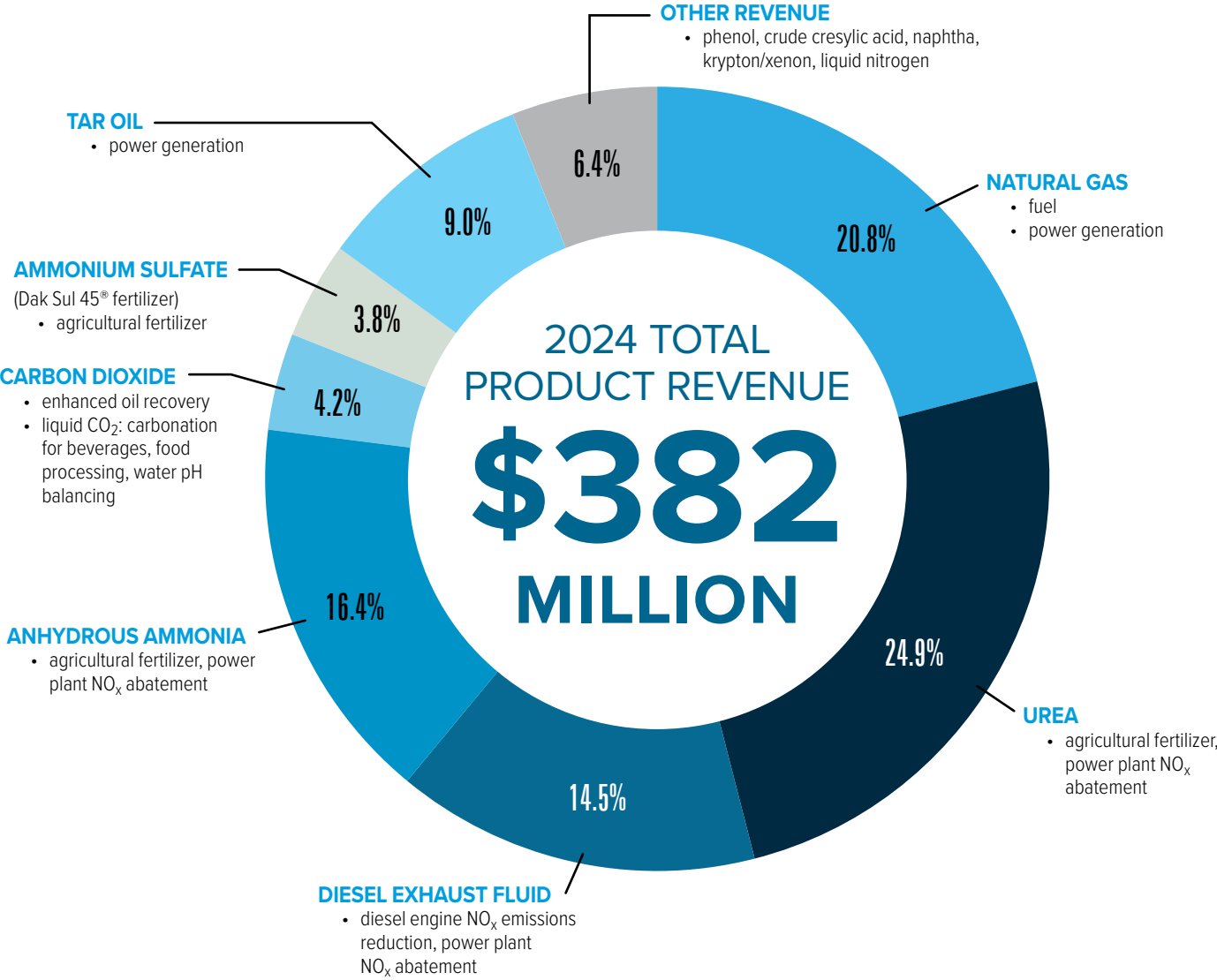


DAKOTA GAS PRODUCT REVENUE

Basin Electric owns and operates the Great Plains Synfuels Plant through its for-profit subsidiary, Dakota Gasification Company. Located near Beulah, North Dakota, the Synfuels Plant has been owned and operated by Dakota Gas since 1988. It is the only commercial-scale coal gasification plant in the United States that manufactures natural gas using Lurgi gasification technology. The Synfuels Plant gasifies lignite coal to produce valuable products. The plant is capable of producing 13 products, including up to 170 million standard cubic feet per day of natural gas, which is sent through the Northern Border pipeline to market.

DAKOTA GASIFICATION COMPANY PRODUCTS

Below is each commodity produced and sold, and examples of its end use. In addition, the percentage of revenue attributed to each product is noted.



Does not include monetization of tax credits related to the carbon capture and sequestration project.