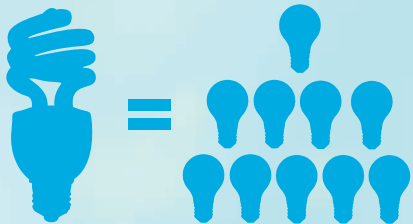


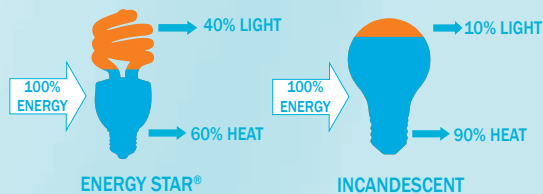
Be green – Keep more green

Compact fluorescent bulbs offer long life, energy savings, and environmental advantages.

- Use at least $\frac{2}{3}$ less energy than standard incandescent bulbs to provide the same amount of light, and last up to 10 times longer



- Save \$30 or more in energy costs over the bulb's lifetime
- Generate 70 percent less heat, so they're safer to operate and can cut energy costs associated with home cooling



Take it to the bank...

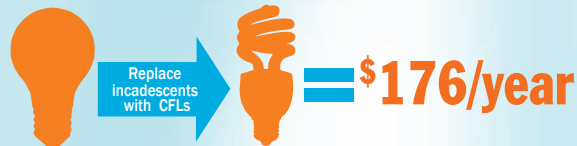


The average home has 20 light bulb sockets.

Replace 10 incandescent bulbs with 14-watt CFL bulbs.

Replace another 10 incandescent bulbs with 23-watt CFL bulbs.

See what you will save:



\$176/year = \$1230
over the life of the bulbs

Check out our website:

www.basinelectric.com

Your Touchstone Energy® Cooperative 
The power of human connections

Copyright® Basin Electric Power Cooperative, Bismarck, ND



To learn more about compact fluorescent bulbs, contact your local electric cooperative.

COMPACT FLUORESCENT BULB

You have options!





HOW TO CHOOSE

THE RIGHT ENERGY STAR QUALIFIED LIGHT BULB

	TABLE/ FLOOR LAMPS	PENDANT FIXTURES	CEILING FIXTURES	CEILING FANS	WALL SCONCES	RECESSED CANS	TRACK LIGHTING	OUTDOOR COVERED	OUTDOOR EXPOSED
SPIRAL	✓		✓	✓	✓			✓	
COVERED A-SHAPE	✓	✓		✓				✓	
GLOBE		✓							
TUBED	✓		✓		✓			✓	
CANDLE				✓	✓			✓	
INDOOR REFLECTOR				✓		✓	✓		
OUTDOOR REFLECTOR									✓

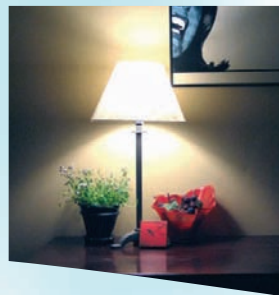
Different lamps and light for every need

CFLs will save you the most money when you use them in areas where the lights are on for several hours a day.

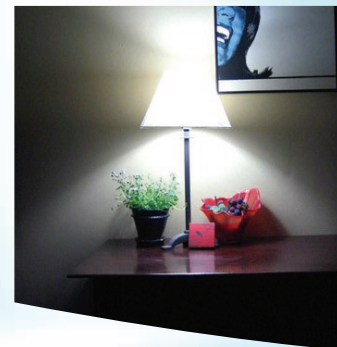
If a fixture or lamp is 3-way or dimmable, make sure the CFL you use is 3-way or dimmable.

CFLs come in different colors of light, just like incandescents do. Look for what you prefer: soft white, bright white, or daylight.

Most CFLs offer soft or warm white light similar to incandescent light (2700K-3000K). These lights will work in most residential settings and will enhance red, yellow and orange.



CFLs also come in higher kelvin color temperatures (3500K, 4100K, 5000K, 6500K). These will emit more white to bluish-white light, usually identified as "bright white," "natural," or "daylight." These lights will enhance blue, green and violet.



Mercury: It's there ... but how much?

CFLs contain mercury – it's essential to how they run so efficiently. Each bulb contains about 4 milligrams sealed within the glass tubing. That amount would cover the tip of a ballpoint pen.

If you break a bulb, the Environmental Protection Agency says you should air out the room. Don't use a vacuum or broom to clean up; scoop up glass fragments and powder and put in a plastic bag. For more details, visit www.energystar.gov.

To dispose of a burned out or broken bulb, contact your local city or solid waste agency. If permitted, tie it up in a plastic bag and place in your outside trash. If the bulb burns out while under warranty, check with the manufacturer for a refund or replacement. For information on recycling or other disposal options, visit www.epa.gov/bulbrecycling.

The old mercury thermometer in your medicine cabinet has 125 times more mercury.

125 = 1