

Contact Information

If you have any questions, concerns or would like a map showing the line route in your area, please contact:

Kelly Suko

Basin Electric Chamberlain office
701-557-5793
701-471-0756 (cell)

Veda Christman

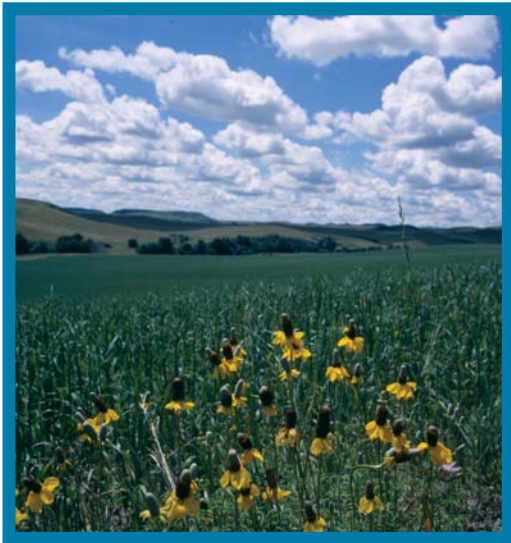
Basin Electric Chamberlain office
701-557-5794
775-741-4856 (cell)

Mike Murray

Basin Electric Headquarters
701-557-5454

Scott Wiseman

Basin Electric Headquarters
701-557-5664



1717 East Interstate Avenue
Bismarck, ND 58503-0564

Big Bend Dam-to-Witten TRANSMISSION PROJECT

Project information for landowners along the proposed Big Bend Dam-to-Witten Transmission Line

Strengthening power delivery
in Central South Dakota

Introduction

Basin Electric Power Cooperative is a consumer-owned, regional cooperative headquartered in Bismarck, ND. Basin Electric generates and transmits electricity to 135 member rural electric systems in nine states. Those member systems distribute electricity to about 2.8 million consumers. As its members' electric power requirements increase, Basin Electric must periodically construct new transmission lines and substations to serve those needs.

West Central and Rosebud electric cooperatives are two such local distribution cooperatives that depend on affordable and reliable power from Basin Electric to serve their members' electrical power needs.

About the project

A new 230-kilovolt (kV) transmission project is proposed to be constructed in Central South Dakota. The Big Bend Dam-to-Witten project will include a new substation south of the Big Bend Dam named the Lower Brule Substation. A two-mile double circuit 230-kV transmission line will be built between the dam and the new substation. This section of transmission line and the Lower Brule Substation will be built by the Western Area Power Administration. Basin Electric will build a new 230-kV single circuit line from the Lower Brule Substation to a new substation expansion near Witten, SD. This line is approximately 70 miles.

Why is the line needed?

Increasing demand for electricity is driving the need for additional transmission capacity in this area. Because of development of the TransCanada pipeline, transmission studies have indicated the current system has reached its load limit. Transmission lines need to be constructed to get enough power to the area.

The Big Bend Dam-to-Witten line will also greatly improve the reliability of the system, making a stronger overall transmission infrastructure throughout the region.

Building the transmission line

Five major elements are required before transmission lines can be constructed. They include permitting, route selection, surveying, line design and right of way.

Permitting

Basin Electric must get a permit from the South Dakota Public Utilities Commission (PUC) and environmental approval from the Rural Utilities Service (RUS) and Western Area Power Administration before construction on the project can begin.

The cooperative will submit its permit application to the PUC in late-2011. After receiving the application, the PUC will schedule a hearing, at which anyone can provide comments.

An Environmental Assessment with scoping will be completed under the direction of RUS as lead agency and Western as a cooperating agency. The report is expected to be completed in 2012.

Route selection

Basin Electric will work to determine a route for the transmission line that minimizes environmental impact and the impact on landowners and area residents. A preferred route will be established under the guidelines of the Environmental Assessment process. Public scoping meetings will be held to explain the project and receive the public's comments.

Surveying

Landowners along potential routes will be contacted to request permission for biological, property boundary, terrain mapping and archeological surveys. Each of these surveys is required for the project.

In the summer 2011, biologists will complete the biological survey, thoroughly reviewing the route. Property survey work will be completed by registered land surveyors to determine the location of section and property corners so easement descriptions can be made.

Line design

Transmission line design will meet or exceed all applicable National Electrical Safety Code and RUS codes and standards. The final locations for the structures will be determined by late fall 2011. Landowner's will have an opportunity to review final route and structure locations. Basin Electric will try to accommodate any reasonable suggestions for the route and final structure placement.

Right of way

The right-of-way width is 125 feet, which equals about 15.15 acres per mile of line. Each structure has one pole, and will be spaced about 800 feet apart. Depending on terrain, there will be approximately seven structures per mile of line.

A professional land appraiser will be hired to determine land value. In late summer, landowners will be contacted to start the easement acquisition process. Basin Electric will give landowners ample time to review and comment on the area of the easement. Payment for the easement will be made immediately or at another time if requested by the landowner.

Construction

Construction on the Big Bend Dam-to-Witten line is scheduled to begin in 2013 and be completed by the end of the year. If any damages to public roads are incurred during construction, they will be repaired. Landowners will be compensated for all crop damage caused by construction or maintenance activities.